



AGGREGATE PROGRAM DATA

2014 – 15 PHYSICAL THERAPIST EDUCATION PROGRAMS
FACT SHEETS

Beisner, Kathryn

COMMISSION ON ACCREDITATION IN PHYSICAL THERAPY EDUCATION | 1111 N. FAIRFAX ST. ALEXANDRIA, VA
ACCREDITATION@APTA.ORG



2014 – 15 Fact Sheet

Physical Therapist Education Programs

This Fact Sheet is designed to provide the education community with current and historical information about physical therapist education programs, students and faculty. The data included in this Fact Sheet is taken from the following sources:

- THE 2014 ANNUAL ACCREDITATION REPORT, COMPLETED DECEMBER 2014 BY US ACCREDITED PROGRAMS (N=242)
- THE 2012, 2011, 2010, 2009, 2008, 2007, 2006 AND 2005 ANNUAL ACCREDITATION REPORTS
- THE 1998, 2000, 2002, AND 2004 BIENNIAL ACCREDITATION REPORTS
- PREVIOUS SURVEYS OF THE PT EDUCATIONAL PROGRAMS CONDUCTED BY THE EDUCATION DIVISION
- DEPARTMENT OF ACCREDITATION RECORDS
- LICENSURE PASS RATE INFORMATION PROVIDED BY THE FSBPT ON APRIL 2004, APRIL 2005, APRIL 2006, APRIL 2007, APRIL 2011, APRIL 2012, APRIL 2014 AND APRIL 2015.

Unless otherwise indicated, the data reflects accredited and developing physical therapist education programs in the United States for the academic year 2014 – 15.

Symbols

Many tables in this volume use a series of symbols to alert the reader to special statistical notes. These symbols, and their meanings, are as follows:

— Not available.

† Not applicable.

Rounds to zero.

‡ Reporting standards not met.

August 2015

CAPTE's Home Page address is <https://capteonline.org>

CAPTE's Resource Documents address is <https://capteonline.org/resources>

This publication is only available online. To download, view, and print the report as a PDF file, go to CAPTE's Resource Documents address shown above.

CONTENT CONTACT

ELLEN PRICE – LEAD PHYSICAL THERAPIST PROGRAMS SPECIALIST

KATHRYN BEISNER – SR. SPECIAL PROJECTS COORDINATOR

ACCREDITATION@APTA.ORG

Glossary

Faculty – All faculty including core and associated.

Associated Faculty – Associated faculty are those individuals who have classroom and/or laboratory teaching responsibilities in the curriculum and who are not core faculty or clinical education faculty. The associated faculty may include individuals with full-time appointments in the unit in which the professional program resides, but who have primary responsibilities in programs other than the professional program.

Core Faculty – Core faculty are those individuals appointed to and employed primarily in the program. Members of the core faculty typically have full-time appointments, although some part-time faculty members may be included among the core faculty. The core faculty are generally the group with the responsibility and the authority related to the curriculum. Includes Program Directors and DCE's; does not include associated faculty.

Other Faculty – Core faculty excluding Program Directors and DCE's.

Table of Contents

| | |
|---|----|
| THE AVERAGE PHYSICAL THERAPIST PROGRAM..... | 2 |
| PROGRAM DATA | 4 |
| Numbers of Programs..... | 4 |
| Distribution of Programs..... | 5 |
| Financing of Professional Education | 6 |
| Measures of Program Length..... | 7 |
| Credits Required | 8 |
| Curricular Models..... | 9 |
| Clinical Education..... | 9 |
| Outcomes..... | 10 |
| STUDENT DATA | 11 |
| Admissions | 11 |
| Enrollment..... | 13 |
| Graduates..... | 13 |
| FACULTY DATA | 14 |
| Number of Faculty | 14 |
| Ratios | 14 |
| Workload..... | 14 |
| Scholarship & Grants..... | 15 |
| Clinical Specialists | 15 |
| Faculty Demographics..... | 16 |
| Degrees Held, Rank, Tenure Status..... | 16 |
| Salaries | 19 |

THE AVERAGE PHYSICAL THERAPIST PROGRAM

| | 2011-2012 | | 2012-2013 | | 2014-2015 | |
|--|-------------------------|----------------|-------------------------|----------------|----------------------|----------------|
| Type of Institution (% of Total Programs) | Public (51.1%) | | Public (50.3%) | | Private (51.2%) | |
| Geographic Location (% of Total Programs) | Middle Atlantic (18.5%) | | Middle Atlantic (19.5%) | | South Atlantic (19%) | |
| Top 3 States (States with Highest % of Total Programs) | (NJ, NY, PA) | | (NJ, NY, PA) | | (NY, PA, CA) | |
| Costs (Mean) | Public | Private | Public | Private | Public | Private |
| Annual Tuition | 13,948 | 29,472 | 15,025 | 31,716 | 15,842 | 32,591 |
| Annual Fees | 1,883 | 1,200 | 1,970 | 1,200 | 2,256 | 1,599 |
| Total Cost of Professional Program *Room & Board Excluded | 45,750 | 85,289 | 50,294 | 94,251 | 55,997 | 99,797 |
| Admissions (Mean) | 2011 | | 2012 | | 2014 | |
| Planned Class Size | 44 | | 44 | | 41 | |
| Total Applicants | 357 | | 425 | | 472 | |
| Applicants Qualified | 235 | | 284 | | 312 | |
| Applicants Offered Place | 86 | | 86 | | 79 | |
| Applicants Enrolled | 43 | | 42 | | 41 | |
| GPA of Enrollees | 3.5 | | 3.5 | | 3.5 | |
| Enrollment (Mean) | | | | | | |
| Total Students Enrolled | 125 | | 123 | | 126 | |
| Percent Women Enrolled | 62% | | 63% | | 63% | |
| Percent Minority Enrolled | 17% | | 22% | | 17% | |
| Outcomes | | | | | | |
| Degree Awarded (% of Total Programs) | DPT (90%) | | DPT (90%) | | DPT (97%) | |
| Graduates Per Program (Mean) | 36.5 | | 38.6 | | 41 | |
| Graduation rate ('07, '08, '09, '10, '11) (Mean) | 90.1% (08, 09, 10) | | 97.5% (09, 10, 11) | | 92% (11, 12, 13) | |
| Percent Graduates Minority (Mean) | 17.1% | | 20.7% | | 13% | |
| Licensure Pass Rate, First Time Takers (Mean) | 87.1% ('10) | | 87.7% ('11) | | 91% ('13) | |
| Licensure Pass Rate, Ultimate (Mean) | 98.8% | | 98.5% | | 96% | |
| Employment Rate, Post 6 Months Graduation (Mean) | 99.7% | | 99.5% | | 100% | |
| Length of Program (Professional Phase) | | | | | | |
| Curricular Format (% of Total Programs) | 4+3 (65.6%) | | 4+3 (65.6%) | | 4+3 (66%) | |
| Weeks in Class (Didactic/Laboratory) (Mean) | 86.1 | | 86.1 | | 87 | |
| Weeks in Class (Full-Time Clinical Education) (Mean) | 35.9 | | 35.9 | | 36 | |
| Total Weeks in Program (Mean) | 122 | | 122 | | 123 | |
| Contact/Clock Hours (Didactic/Laboratory) (Mean) | 1,759 | | 1,759 | | 1,906 | |

2014 – 15 Fact Sheets
Physical Therapist Education Programs

| | 2011-2012 | | | 2012-2013 | | | 2014-2015 | | |
|--|------------------|------------|------------------|------------------|------------|------------------|------------------|------------|------------------|
| Contact/Clock Hours (Clinical Education) (Mean) | 1,431 | | | 1,431 | | | 1,421 | | |
| Total Contact/Clock Hours in Program (Mean) | 3,190 | | | 3,190 | | | 3,394 | | |
| Curriculum (Mean) | | | | | | | | | |
| Academic Calendar | Semesters (89%) | | | Semesters (86%) | | | Semesters (85%) | | |
| Curricular Model | Hybrid (71%) | | | Hybrid (74.8%) | | | Hybrid (74%) | | |
| Semester Credits in Prerequisite Phase | 115.5 | | | 115.7 | | | 116 | | |
| Semester Credits in Professional Phase | 91 | | | 93 | | | 94 | | |
| Total Semester Credits Required to Complete | 116 | | | 116 | | | 118 | | |
| Clinical Education (Mean) | | | | | | | | | |
| Clinical Education Sites | 373 | | | 458 | | | 476 | | |
| Sites Accepted Students Every Year | 99.5 | | | 98.6 | | | — | | |
| Sites Accepted Students Every Other Year | 58.7 | | | 58.8 | | | — | | |
| Credentialed Clinical Instructors | 45.3 | | | 48.3 | | | 51 | | |
| Certified Clinical Instructors | 22.4 | | | 22.4 | | | 25 | | |
| Faculty (Mean) | | | | | | | | | |
| Full-Time Core Faculty Positions | 10 | | | 10 | | | 10 | | |
| Part-Time Core Faculty Positions | 1.1 | | | 2.5 | | | 3 | | |
| Associated Faculty Positions | 6.9 | | | 6.9 | | | 8 | | |
| Core Faculty to Student Ratio | 1:11 | | | 1:11 | | | 1:12 | | |
| Faculty to Student Ratio (Lab) | 1:13 | | | 1:13 | | | 1:13 | | |
| Full-Time Core Faculty Characteristics (Mean) | | | | | | | | | |
| | Director* | DCE | Faculty** | Director* | DCE | Faculty** | Director* | DCE | Faculty** |
| Age | 54.3 | 47.5 | 48.5 | 56.6 | 49.7 | 49.9 | 56 | 49 | 49 |
| Total Years as Faculty Member | 21.5 | 11.5 | 13.5 | 21.5 | 11.5 | 13.5 | 21 | 11 | 13 |
| Years as Faculty Member (Current Program) | 14.5 | 9.5 | 10.4 | 15.3 | 9.7 | 10.6 | 14 | 9 | 10 |
| Full-Time Core Faculty Workload (%) | | | | | | | | | |
| Workload Allotted to Teaching in Entry Level | 25 | 37 | 55.6 | 24.3 | 39 | 50 | 26 | 38 | 51 |
| Workload Allotted to Service | 10.7 | 9.4 | 10.5 | 10.6 | 9.7 | 10.4 | 10 | 10 | 11 |
| Workload Allotted to Clinical Practice | 2.2 | 4.7 | 7 | 2.2 | 4.6 | 6.7 | 2 | 4 | 7 |
| Workload Allotted to Scholarship | 14.7 | 9.7 | 21.3 | 15.7 | 9.7 | 21.6 | 10 | 14 | 22 |

- Not available.

* Director refers to Program Director.

** Faculty refers to Other Faculty.

PROGRAM DATA

Numbers of Programs

Figure 1 Average number of programs in the US by degree offered 2011 – 15

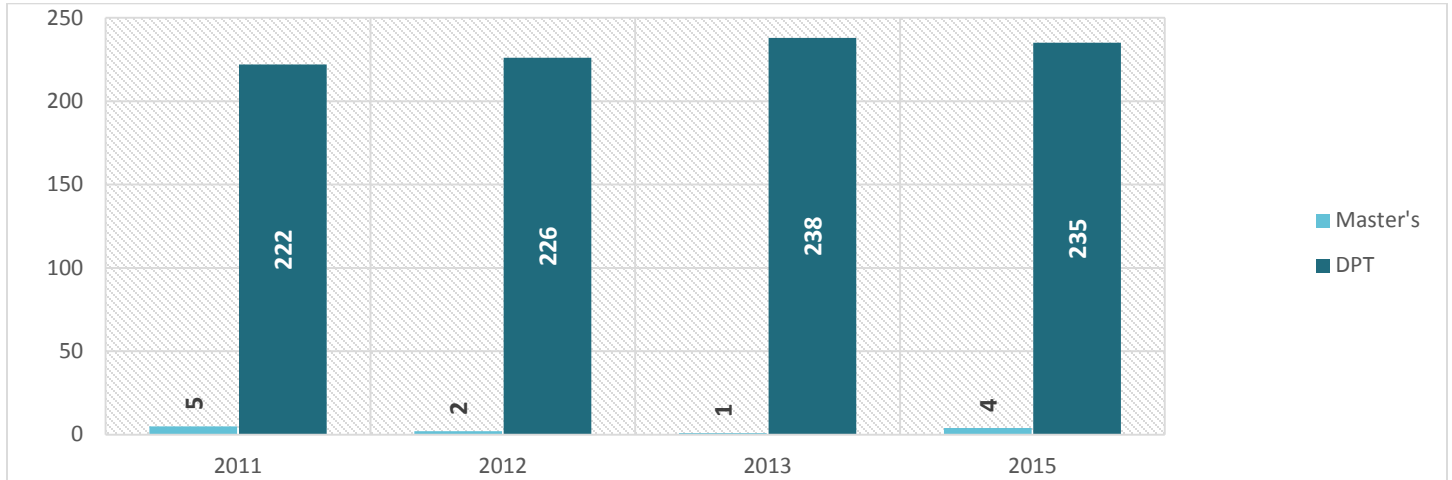
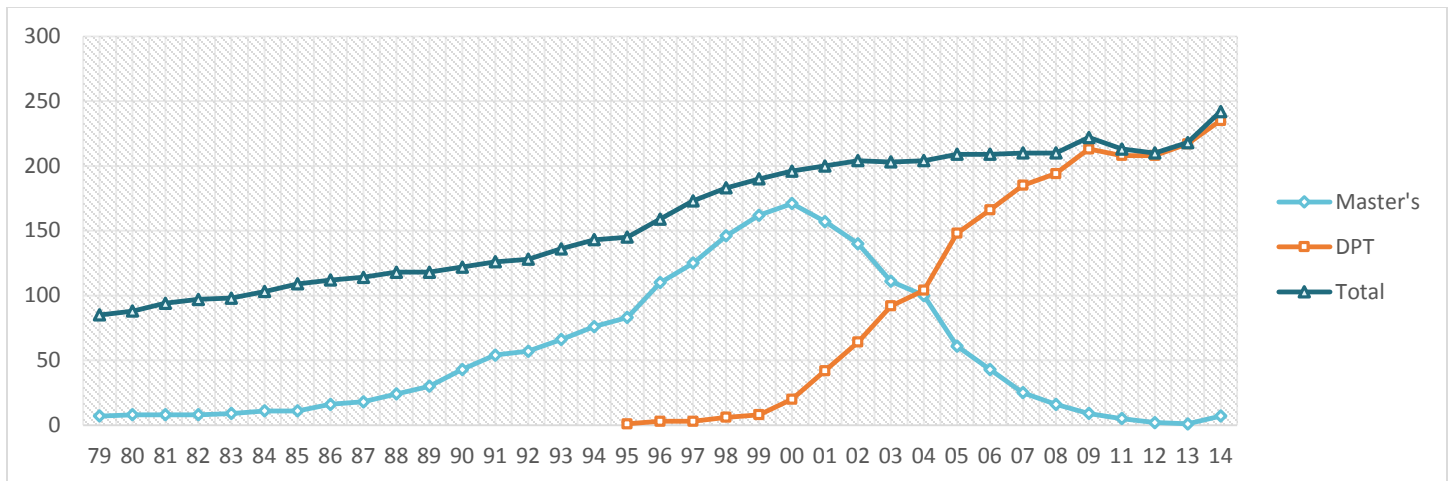


Figure 2 Number of accredited programs by degree offered 1979 – 2015



Distribution of Programs

Table 1 Distribution of programs by geographical region 2007 – 15 [as of 2/2015]

| | States | 2007 | 2009 | 2011 | 2012 | 2013 | 2015 |
|--------------------|--|------------|------------|------------|------------|------------|------------|
| South Atlantic | DE, DC, FL, GA, MD, NC, PR, SC, VA, WV | 39 | 40 | 46 | 42 | 44 | 47 |
| Middle Atlantic | NJ, NY, PA | 42 | 42 | 42 | 41 | 41 | 44 |
| East North Central | IL, IN, MI, OH, WI | 32 | 34 | 34 | 33 | 32 | 34 |
| West North Central | IA, KS, MN, MO, NE, ND, SD | 22 | 23 | 23 | 23 | 22 | 25 |
| West South Central | AR, LA, OK, TX | 20 | 21 | 23 | 19 | 20 | 23 |
| New England | CT, ME, MA, NH, RI, VT | 16 | 17 | 18 | 17 | 17 | 17 |
| Pacific | AK, CA, HI, OR, WA | 18 | 20 | 18 | 19 | 18 | 22 |
| East South Central | AL, KY, MS, TN | 12 | 12 | 13 | 12 | 14 | 12 |
| Mountain | AZ, CO, ID, MT, NV, NM, UT, WY | 9 | 12 | 12 | 12 | 9 | 15 |
| Other | Canada, Scotland | 4 | 4 | 3 | 3 | 3 | 3 |
| Total | | 214 | 225 | 232 | 221 | 220 | 242 |

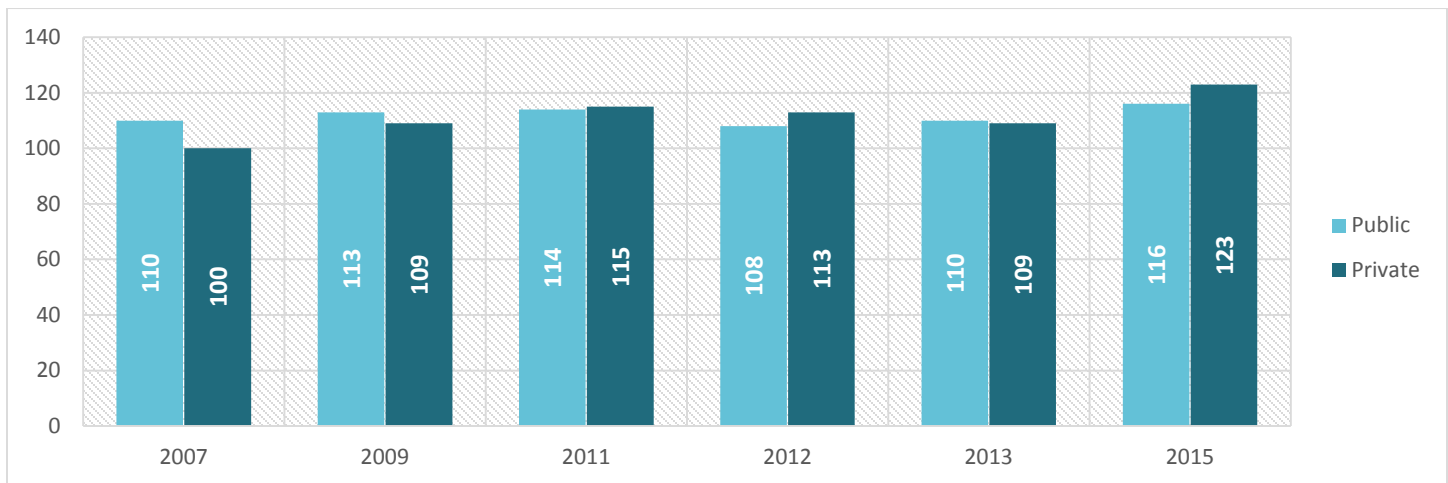
Table 2 Distribution of programs in the US by regional accreditation 2007 – 15

| | 2007 | 2009 | 2011 | 2012 | 2013 | 2015 |
|---------------|------------|------------|------------|------------|------------|------------|
| North Central | 66 | 69 | 72 | 70 | 70 | 75 |
| Southern | 55 | 59 | 63 | 58 | 54 | 64 |
| Middle States | 48 | 48 | 48 | 47 | 48 | 50 |
| New England | 16 | 18 | 18 | 17 | 18 | 18 |
| Western | 14 | 15 | 14 | 15 | 15 | 22 |
| Northwest | 8 | 9 | 10 | 10 | 9 | 10 |
| Total | 208 | 207 | 218 | 225 | 217 | 239 |

Table 3 Distribution of programs in the US by Carnegie Classification 2007 – 15 [as of 2/16/2015]

| 2006 Classification | 2007 | 2008 | 2011 | 2012 | 2013 | 2015 |
|--|------------|------------|------------|------------|------------|------------|
| Doctoral/Research Universities | 22 | 22 | 25 | 22 | 23 | 17 |
| Research Universities (very high research activity) | 33 | 33 | 33 | 32 | 33 | 39 |
| Research Universities (high research activity) | 27 | 28 | 29 | 30 | 27 | 35 |
| Master's Colleges and Universities (larger programs) | 56 | 58 | 62 | 60 | 57 | 71 |
| Master's Colleges and Universities (medium programs) | 19 | 21 | 20 | 19 | 19 | 15 |
| Master's Colleges and Universities (smaller programs) | 10 | 11 | 11 | 11 | 11 | 12 |
| Baccalaureate Colleges – Arts & Sciences | 1 | 1 | 1 | 2 | 1 | 1 |
| Baccalaureate Colleges –Diverse Fields | 3 | 3 | 4 | 4 | 3 | 5 |
| Special Focus Institutions – Medical Schools and Medical Centers | 32 | 34 | 33 | 40 | 32 | 30 |
| Special Focus Institutions – Other Health Professions Schools | 4 | 5 | 9 | 6 | 4 | 12 |
| Not Classified | 3 | 6 | 2 | 5 | 6 | 2 |
| Total | 210 | 222 | 229 | 231 | 216 | 239 |

Figure 3 Distribution of programs in the US by type of institution 2007 – 15 (N= 239)



Financing of Professional Education

Table 4 Average annual tuition, fees, and other costs by type of institution FY 2014 – 15 (\$)

| | | Public In-State | Public Out-of-State | Private |
|------------------------------------|--------|-------------------|---------------------|--------------------|
| Annual Tuition | Range | \$ 1,637 – 36,010 | \$ 6,371 – 53,466 | \$ 19,548 – 56,700 |
| | Median | 15,920 | 32,122 | 31,454 |
| | Mean | 15,842 | 31,082 | 32,591 |
| | STDEV | 6,027 | 9,870 | 6,661 |
| Annual Fees | Range | 0 – 12,447 | 0 – 12,447 | 0 – 15,502 |
| | Median | 2,036 | 2,036 | 1,050 |
| | Mean | 2,256 | 2,256 | 1,599 |
| | STDEV | 1,829 | 1,829 | 1,939 |
| Other Program Expenses | Range | 0 – 27,010 | 0 – 27,010 | 0 – 35,268 |
| | Median | 3,545 | 3,545 | 3,517 |
| | Mean | 4,309 | 4,309 | 4,196 |
| | STDEV | 4,080 | 4,080 | 4,307 |
| Total Cost of Professional Program | Range | 13,420 – 116,955 | 21,926 – 174,577 | 23,550 – 171,547 |
| | Median | 53,015 | 102,950 | 97,770 |
| | Mean | 55,997 | 100,083 | 99,797 |
| | STDEV | 18,902 | 29,855 | 23,583 |

Table 5 Program expenses for programs in the US FY 2014 – 15 (\$)

| | | |
|--|-------|-----------------------|
| Total Operating Expenses (excluding salary & benefits) | Range | \$ 14,858 – 8,258,382 |
| | Mean | 372,786 |
| Total Salary Expenses (excluding benefits) | Range | 378,760 – 4,799,646 |
| | Mean | 1,205,878 |
| Operating and salary expense per enrolled student | Range | \$ 2,009 – 44,236 |
| | Mean | 12,466 |

Table 6 Program expenses for accredited programs in the US by type of institution FY 2014 – 15 (\$)

| | | Public | Private |
|--|-------|-----------------------|-----------------------|
| Total Operating Expenses (excluding salary & benefits) | Range | \$ 14,858 – 1,995,224 | \$ 23,500 – 8,258,382 |
| | Mean | 242,270 | 514,034 |
| Total Salary Expenses (excluding benefits) | Range | 378,760 – 3,097,036 | 403,474 – 4,799,646 |
| | Mean | 1,194,829 | 734,168 |
| <hr/> | | | |
| Operating and salary expense per enrolled student | Range | \$ 3,679 – 27,963 | \$ 5,438 – 44,236 |
| | Mean | 12,312 | 11,697 |

Measures of Program Length

Table 7 Academic calendar 2014 – 15 (%)

| | % of programs |
|------------|---------------|
| Semesters | 85 % |
| Trimesters | 10 % |
| Quarters | 5 % |

Table 8 Average length of professional curriculum (in weeks) 2003 – 15

| | | 03 – 04 | 04 – 05 | 2009 – 10 | 2010 – 11 | 2011 – 12 | 2012 – 13 | 2014 – 15 |
|---|-------|----------|----------|-----------|-----------|-----------|-----------|-----------|
| Number of weeks in didactic portion | Range | 47 - 127 | 44 – 124 | 43 – 122 | 71 – 120 | 48 – 122 | 34 – 161 | 48 – 157 |
| | Mean | 78.7 | 79.6 | 85.3 | 85.3 | 85.4 | 93.2 | 87.4 |
| Number of weeks in full-time Clinical Education | Range | 18 – 58 | 18 – 58 | 20 – 55 | 24 – 60 | 23 – 60 | 23 – 68 | 21 – 58 |
| | Mean | 30.5 | 31.4 | 35.1 | 35.9 | 35.9 | 35.6 | 35.6 |
| Total number of weeks in program | Range | 69 – 167 | 67 – 160 | 65 – 164 | 95 – 164 | 86 – 164 | 75 – 180 | 84 – 180 |
| | Mean | 109.2 | 111 | 120.1 | 121.2 | 122 | 122.5 | 122.8 |

Table 9 Average length of professional program (N = 224)

| Length in Weeks | | |
|---|-------|---------------|
| Number of weeks in didactic portion | Range | 48 – 157 |
| | Mean | 87 |
| | STDEV | 15 |
| Number of weeks in full-time clinical education | Range | 21 – 58 |
| | Mean | 36 |
| | STDEV | 15 |
| Total number of weeks in program | Range | 84 – 180 |
| | Mean | 123 |
| | STDEV | 5 |
| Length in Contact/Clock Hours | | |
| Number of contact/clock hours in didactic portion | Range | 1,068 – 4,878 |
| | Mean | 1,937 |
| | STDEV | 618 |
| Number of contact/clock hours in part-time clinical education | Range | 10 – 1,480 |
| | Mean | 148 |
| | STDEV | 219 |
| Number of contact/clock hours in full-time clinical education | Range | 840 – 2,320 |
| | Mean | 1,421 |
| | STDEV | 203 |
| Total number of contact/clock hours in program | Range | 1,403 – 6,518 |
| | Mean | 3,394 |
| | STDEV | 652 |

Credits Required

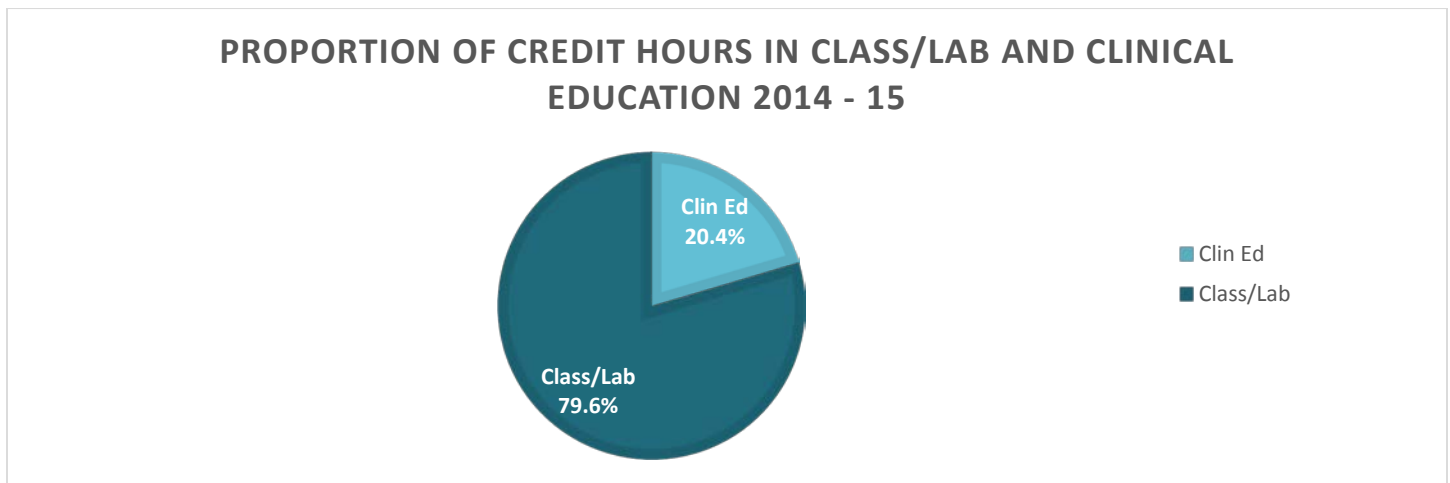
Table 10 Average pre-professional and professional semester credits required for accredited programs in the US 2009 – 15

| | | 2009 – 10 | 2010 – 11 | 2011 – 12 | 2012 – 13 | 2014 – 15 |
|--------------------|--------|-----------|-----------|-----------|-----------|-----------|
| Pre-Professional | Range | 60 – 130 | 90 – 130 | 80 – 180 | 80 – 180 | 80 – 130 |
| | Median | 120 | 120 | 120 | 120 | 120 |
| | Mean | 114.2 | 115.6 | 115.8 | 115 | 116 |
| | STDEV | 13.2 | 10.4 | 12.7 | 12.6 | 11 |
| Professional* | Range | 90 – 185 | 88 – 151 | 81 – 185 | 77 – 185 | 90 – 171 |
| | Median | 116 | 113 | 115 | 116 | 117 |
| | Mean | 116.5 | 113.9 | 116.4 | 117.2 | 118 |
| | STDEV | 15.7 | 12.6 | 16 | 29 | 14.6 |
| Clinical Education | Range | — | — | — | — | 2 – 47 |
| | Median | — | — | — | — | 22 |
| | Mean | — | — | — | — | 24 |
| | STDEV | — | — | — | — | 9 |

- Not available.

* Professional excluding clinical education.

Figure 4 Credit hours in classroom/laboratory and clinical education



Curricular Models

Table 11 Percentage of programs by curricular model 2007, 09, 10 – 12, 14 (%)

| | | 2007 | 2009 | 2010 | 2011 | 2012 | 2014 |
|------------------------|---|--------|--------|--------|------|--------|------|
| Hybrid | the curriculum is designed as a combination of two or more of the following models | 60.6 % | 67.8 % | 68.2 % | 71 % | 72.5 % | 73 % |
| Traditional | the curriculum begins with basic science, followed by clinical science and then by physical therapy science | 19.2 | 14.1 | 13.2 | 12.4 | 12 | 11 |
| Systems-based | the curriculum is built around physiological systems (musculoskeletal, neuromuscular, cardiopulmonary, etc.) | 10.1 | 9.1 | 10 | 9.3 | 9 | 8.3 |
| Modified Problem-based | the curriculum uses the problem-based model in the later stages, but the early courses (primarily basic sciences) are presented in the more traditional format of lecture and laboratory | 4.0 | 5.0 | 5.3 | 4.7 | 3.5 | 3.5 |
| Guide-based | the curriculum is built around the disability model, the patient management model, and the preferred practice patterns included in the Guide to Physical Therapist Practice | 2.5 | 1.5 | 1.6 | 1 | 1 | 0.43 |
| Case-based | the curriculum utilizes patient cases as unifying themes throughout the curriculum | 1.0 | 0.5 | 0.5 | 0 | 0.5 | 0.88 |
| Problem-based | the entire curriculum (including basic and clinical science content) is built around patient problems that are the focus for student-centered learning through the tutorial process and independent activities | 1.5 | 1.5 | 1.05 | 1.6 | 1.5 | 1.3 |
| Lifespan-based | the curriculum is built around the physical therapy needs of individuals throughout the lifespan (e.g., the basic and clinical sciences and patient management skills, etc., related to the neonate are presented together, followed by those of childhood, adolescence, early adulthood, middle age and old age) | 1.0 | 0.5 | 0 | 0 | 0 | 0.44 |

Clinical Education

Table 12 Average length of final clinical education experience 2009 – 14

| | | 2009 | 2010 | 2011 | 2012 | 2014 |
|--|-------|--------|--------|--------|--------|--------|
| Number of weeks in final clinical experience | Range | 4 – 48 | 6 – 52 | 6 – 52 | 8 – 68 | 5 – 52 |
| | Mean | 19 | 19.6 | 20 | 21.2 | 21 |

Outcomes

Table 13 Sum of all degrees conferred 2003 – 14

| | 2003 | 2004 | 2005 | 2006 | 2008 | 2009 | 2010 | 2011 | 2012 | 2014 |
|-------|------|------|------|------|------|------|------|------|------|------|
| Total | 5119 | 4935 | 5242 | 5337 | 5809 | 6373 | 6411 | 7423 | 7998 | 8513 |

Table 14 Graduation rates 2003 – 14 (%)

| | 2003* | 2004* | 2005* | 2007* | 2010* | 2011* | 2012* | 2014* |
|--------|----------|----------|----------|----------|----------|----------|----------|----------|
| Range | 50 – 100 | 14 – 100 | 30 – 100 | 11 – 100 | 43 – 100 | 47 – 100 | 70 – 100 | 60 – 100 |
| Mean | 88.4 | 89.6 | 89 | 88.7 | 89.17 | 90.1 | 96.1 | 91.9 |
| Median | 91.7 | 91.3 | 90.5 | 92.1 | 97.8 | 91.6 | 99 | 94 |
| STDEV | 10.9 | 10.2 | 11.1 | 11.7 | 8.7 | 7.8 | 10.6 | 7.7 |

*Rate based on the percentage of students admitted to the professional program who complete the program within 150% of the time normally expected for completion.

Table 15 Employment rates at 6 months post-graduation 2003 – 14 (%)

| | 2003 | 2004 | 2005* | 2006* | 2008* | 2010* | 2011* | 2012* | 2014* |
|-------|---------|----------|----------|----------|----------|----------|----------|----------|----------|
| Range | 0 – 100 | 86 – 100 | 50 – 100 | 75 – 100 | 83 – 100 | 85 – 100 | 83 – 100 | 83 – 100 | 92 – 100 |
| Mean | 95.8 | 98.6 | 99.3 | 99.6 | 99.5 | 99.6 | 99.5 | 99.5 | 99 |

* To the best of the program's ability to determine, the % of graduates employed within 6 months of passing the licensure exam.

Table 16 Pass rates of first time takers on licensure exam 2003 – 14 (%)

| | 2003** | 2004** | 2005*** | 2006*** | 2007**** | 2008§ | 2009§ | 2011§ | 2012§ | 2014§ |
|--------|----------|---------|---------|---------|----------|----------|----------|---------|----------|---------|
| Range | 13 - 100 | 0 - 100 | 0 - 100 | 0 – 100 | 33 – 100 | 25 – 100 | 38 – 100 | 0 – 100 | 47 – 100 | 0 – 100 |
| Mean | 74.4 | 68.2 | 81.1 | 85.2 | 86.2 | 83.9 | 86.5 | 88.2 | 87.7 | 91 |
| Median | 75.8 | 71.4 | 84.1 | 88.6 | 90.9 | 87 | 90 | 92.5 | 90-9 | 94 |
| STDEV | 16.3 | 19.3 | 15.9 | 14.3 | 13.8 | 13.9 | 12.2 | 13.9 | 11.71 | 10 |

NOTE Based on data provided by FSBPT: * on 4/19/2004; ** on 4/11/2005; *** on 4/11/2006; **** on 4/18/2007; § on 4/11/2012 for data current as of March 31, 2012; on April 17, 2013; on April 2, 2015.

Table 17 Number of programs by pass rate of first time takers 2003 – 14

| | 2003* | 2004* | 2005** | 2006** | 2007*** | 2008§ | 2009§ | 2011§ | 2012§ | 2014§ |
|--------|-------|-------|--------|--------|---------|-------|-------|-------|-------|-------|
| 0-9% | | 3 | 2 | 1 | | | | | | |
| 10-19% | 1 | | | | | | | | | |
| 20-29% | 3 | 6 | | 1 | | 1 | | 1 | | |
| 30-39% | 4 | 6 | 1 | | 1 | 3 | 1 | 1 | | |
| 40-49% | 4 | 9 | 2 | 2 | 3 | | | 1 | 1 | |
| 50-59% | 14 | 29 | 12 | 7 | 3 | 7 | 5 | 4 | 8 | 6 |
| 60-69% | 32 | 35 | 13 | 10 | 20 | 15 | 15 | 3 | 10 | 6 |
| 70-79% | 49 | 43 | 43 | 26 | 24 | 31 | 24 | 27 | 22 | 15 |
| 80-89% | 47 | 37 | 59 | 59 | 37 | 53 | 49 | 40 | 45 | 41 |
| 90-99% | 22 | 17 | 39 | 55 | 69 | 57 | 77 | 84 | 96 | 112 |
| 100% | 8 | 4 | 21 | 31 | 32 | 20 | 21 | 36 | 27 | 36 |
| N= | 184 | 189 | 192 | 192 | 189 | 187 | 191 | 197 | 209 | 216 |

NOTE Based on data provided by FSBPT: * on 4/19/2004; ** on 4/11/2005; *** on 4/11/2006; **** on 4/18/2007; § on 4/11/2012 for data current as of March 31, 2012; on April 17, 2013; on April 2, 2015.

STUDENT DATA

Admissions

Table 18 Average trends in admissions 2004 – 14

| | | 2004 | 2006 | 2007 | 2009 | 2010 | 2011 | *2012 | *2014 |
|-----------------------------------|-------|------------|-----------|-----------|------------|------------|------------|------------|-------------|
| Planned class size | Range | 10 – 168 | 10 – 162 | 10 – 210 | 14 – 315 | 14 – 110 | 14 – 360 | 10 – 95 | 12 – 117 |
| | Mean | 36 | 37 | 39 | 42.3 | 42. | 43.9 | 42 | 44 |
| Applicants | Range | 11 – 743 | 15 – 808 | 13 – 603 | 35 – 753 | 36 – 904 | 34 – 1,358 | 14 – 1,662 | 17 – 1,870 |
| | Mean | 98 | 139 | 144 | 230 | 290 | 357 | 428 | 471 |
| Qualified Applicants | Range | 1 – 743 | 4 – 629 | 3 – 492 | 23 – 680 | 30 – 781 | 26 – 982 | 14 – 1,193 | 14 – 1398 |
| | Mean | 79 | 103 | 104 | 159.4 | 249.3 | 234.5 | 284 | 289 |
| Applicants Offered place in class | Range | 3 – 337 | 3 – 354 | 3 – 244 | 13 – 411 | 14 – 322 | 14 – 456 | 14 – 406 | 14 – 736 |
| | Mean | 56 | 65 | 57 | 74.2 | 80 | 85.9 | 86 | 87 |
| Applicants enrolled | Range | 3 – 133 | 8 – 162 | 3 – 178 | 7 – 310 | 12 – 100 | 6 – 354 | 10 – 96 | 8 – 117 |
| | Mean | 32 | 36 | 35 | 41.6 | 41 | 43.2 | 42 | 44 |
| Minority students enrolled | Range | 0 – 37 | 0 – 34 | 0 – 41 | 0 – 69 | 0 – 36 | 0 – 104 | 0 – 36 | 1 – 50 |
| | Mean | 5.9 | 6.1 | 6 | 7.1 | 6.2 | 7.2 | 7 | 10 |
| GPA of students enrolled | Range | 2.9 – 3.77 | 2.9 – 3.7 | 2.9 – 3.8 | 3.0 – 3.83 | 3.0 – 3.85 | 3.1 – 3.9 | 3.1 – 3.9 | 3.05 – 3.77 |
| | Mean | 3.3 | 3.37 | 3.44 | 3.5 | 3.5 | 3.5 | 3.5 | 3.5 |

*Starting in 2012 and going forward, expansion programs are required to report admission data separate from parent program.

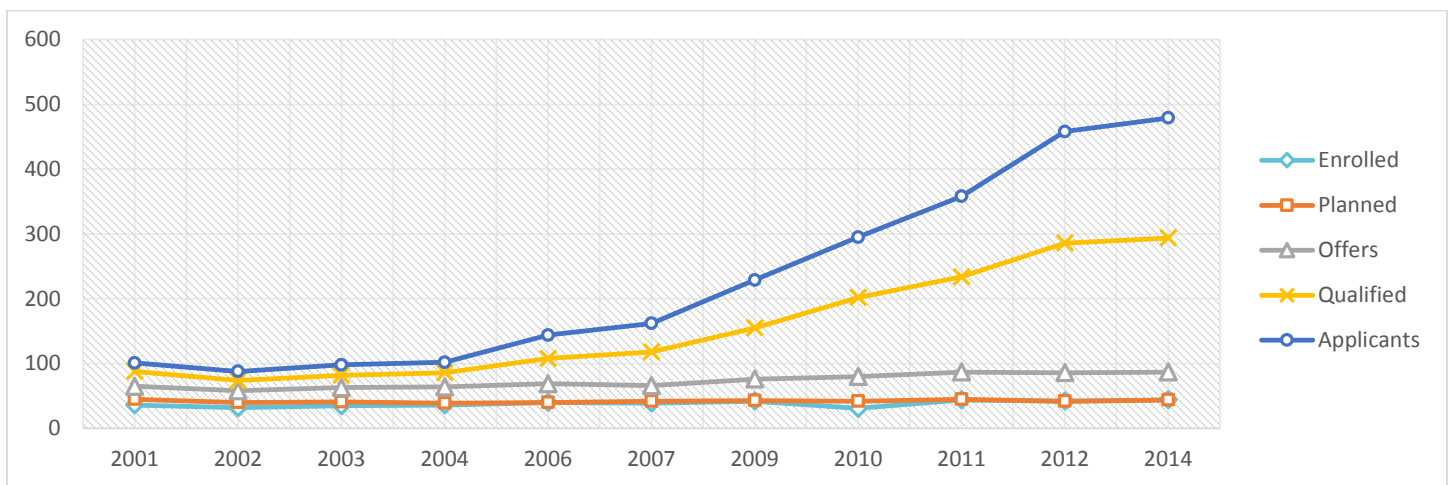
Table 19 Average trends in admissions by public and private institution 2004 – 14

| | | Public | | | | | | | |
|-----------------------------------|-------|-----------|-----------|-----------|------------|-----------|------------|------------|------------|
| | | 2004 | 2006 | 2007 | 2009 | 2010 | 2011 | *2012 | *2014 |
| Planned class size | Range | 12 – 30 | 14 – 90 | 14 – 97 | 14 – 98 | 16 – 100 | 14 – 102 | 14 – 87 | 12 – 91 |
| | Mean | 34.7 | 34.8 | 36 | 37.7 | 42.9 | 39 | 39 | 41 |
| Applicants | Range | 17 – 743 | 27 – 386 | 21 – 404 | 24 – 557 | 36 – 748 | 81 – 1,354 | 58 – 1,662 | 24 – 1,447 |
| | Mean | 89.2 | 120.6 | 148 | 206.3 | 287.3 | 321 | 400 | 472 |
| Qualified Applicants | Range | 10 – 743 | 23 – 257 | 4 – 297 | 23 – 453 | 33 – 748 | 37 – 982 | 30 – 1,193 | 16 – 1,398 |
| | Mean | 72 | 90.7 | 107 | 146.3 | 192.6 | 212 | 267 | 312 |
| Applicants Offered place in class | Range | 13 – 209 | 17 – 183 | 16 – 150 | 19 – 163 | 20 – 247 | 14 – 202 | 14 – 187 | 16 – 370 |
| | Mean | 46.8 | 51.2 | 53 | 60.1 | 79.8 | 71 | 71 | 79 |
| Applicants enrolled | Range | 9 – 97 | 13 – 96 | 8 – 97 | 14 – 98 | 17 – 100 | 14 – 102 | 14 – 87 | 8 – 91 |
| | Mean | 32.3 | 34.3 | 35 | 38.1 | 42.8 | 39 | 40 | 41 |
| Minority students enrolled | Range | 0 – 37 | 0 – 36 | 0 – 38 | 0 – 38 | 0 – 28 | 0 – 35 | 0 – 29 | 0 – 40 |
| | Mean | 5.8 | 5.7 | 5 | 6.2 | 6 | 6 | 6 | 7 |
| GPA of students enrolled | Range | 3.0 – 3.8 | 3.1 – 3.7 | 2.9 – 3.8 | 3.0 – 3.82 | 3.1 – 3.8 | 3.2 – 3.8 | 3.3 – 3.9 | 3.3 – 3.9 |
| | Mean | 3.335 | 3.47 | 3.49 | 3.6 | 3.5 | 3.6 | 3.6 | 3.57 |

| | | Private | | | | | | | |
|-----------------------------------|-------|-----------|-----------|-----------|-----------|-----------|------------|------------|------------|
| | | 2004 | 2006 | 2007 | 2009 | 2010 | 2011 | *2012 | *2014 |
| Planned class size | Range | 10 – 168 | 10 – 162 | 10 – 210 | 20 – 315 | 14 – 110 | 20 – 360 | 10 – 95 | 14 – 117 |
| | Mean | 38.1 | 39.7 | 43 | 47.4 | 41.1 | 50 | 45 | 47 |
| Applicants | Range | 11 – 613 | 15 – 808 | 13 – 603 | 42 – 763 | 39 – 892 | 34 – 1,358 | 14 – 1,684 | 17 – 1,870 |
| | Mean | 109.2 | 157.7 | 140 | 256.4 | 300.5 | 402 | 517 | 487 |
| Qualified Applicants | Range | 11 – 613 | 15 – 629 | 3 – 492 | 32 – 680 | 30 – 781 | 26 – 980 | 14 – 1,184 | 14 – 992 |
| | Mean | 66.8 | 81.3 | 62 | 89.4 | 77 | 102 | 101 | 95 |
| Applicants Offered place in class | Range | 8 – 283 | 14 – 354 | 3 – 244 | 13 – 411 | 14 – 213 | 14 – 456 | 16 – 106 | 14 – 736 |
| | Mean | 66.8 | 81.3 | 62 | 89.4 | 77 | 102 | 101 | 95 |
| Applicants enrolled | Range | 3 – 133 | 10 – 162 | 3 – 178 | 7 – 310 | 12 – 89 | 6 – 354 | 10 – 96 | 12 – 117 |
| | Mean | 32.3 | 39.1 | 35 | 45.3 | 39.4 | 48 | 45 | 47 |
| Minority students enrolled | Range | 0 – 33 | 0 – 34 | 0 – 47 | 0 – 69 | 0 – 36 | 0 – 104 | 0 – 36 | 1 – 50 |
| | Mean | 5.9 | 6.6 | 7 | 8.2 | 6.5 | 8 | 8 | 10 |
| GPA of students enrolled | Range | 2.9 – 3.7 | 2.9 – 3.7 | 2.9 – 3.8 | 3.0 – 3.8 | 3.0 – 3.9 | 3.1 – 3.9 | 3.1 – 3.8 | 3.1 – 3.8 |
| | Mean | 3.23 | 3.26 | 3.37 | 3.4 | 3.5 | 3.47 | 3.47 | 3.5 |

*Starting in 2012 and going forward, expansion programs are required to report admission data separate from parent program.

Figure 5 Trends in admission for DPT programs 2001 – 14



Enrollment

Table 20 Percentage of students enrolled in programs, by race/ethnicity (%)

| | 2004 – 05 N = 15,798 | 2006 – 07 N = 17,733 | 2007 – 08 N = 20,193 | 2009 – 10 N = 23,361 | *2010 – 11 N = 22,332 | 2011 – 12 N = 24,848 | 2012 – 13 N = 25,945 | 2014 – 15 N = 28,514 |
|---|----------------------------|----------------------------|----------------------------|----------------------------|-----------------------------|----------------------------|----------------------------|----------------------------|
| African American | 4.8 % | 4.7 % | 4.7 % | 3.8 % | 3.5 % | 3.4 % | 3.3 % | 3.1 % |
| American Indian / Alaskan Native | 0.5 | 0.4 | 0.4 | 0.4 | 0.4 | 0.4 | 0.4 | 0.4 |
| Asian | - | - | - | - | 6.2 | 5.9 | 6.2 | 6.7 |
| Asian/Pacific Islander | 5.5 | 5.2 | 5.3 | 6.0 | - | - | - | - |
| Caucasian | 79.4 | 81.2 | 81.5 | 81.4 | 81.7 | 81.3 | 80.6 | 79 |
| Hispanic/Latino | 4.8 | 4.4 | 4.5 | 4.4 | 3.9 | 4 | 3.99 | 4.7 |
| Native Hawaiian / Other Pacific Islander | - | - | - | - | # | 0.5 | 0.4 | 0.5 |
| Other | 1.4 | 1.8 | 1.8 | 1.4 | - | - | - | - |
| Two or more races | - | - | - | - | # | 0.8 | 1 | 1.3 |
| Unknown | 3.6 | 2.3 | 1.8 | 2.6 | 3.4 | 3.7 | 4.1 | 4.3 |

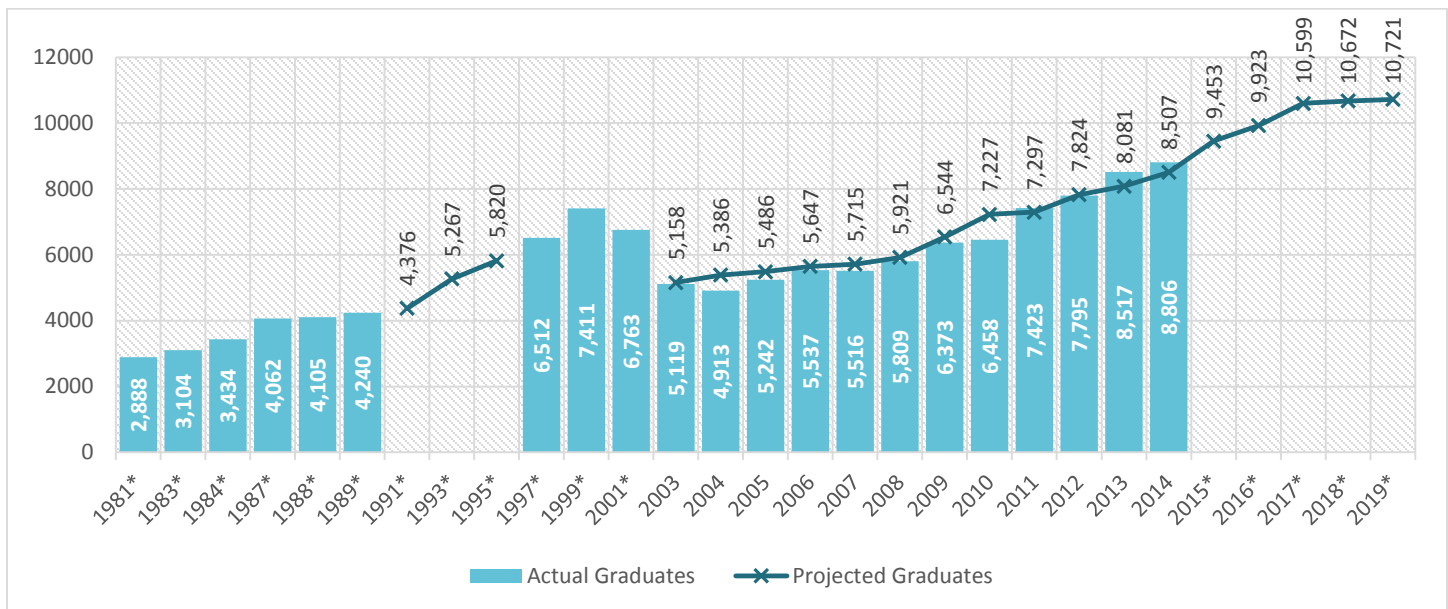
- Not available.

Rounds to zero.

*In 2010 the categories changed due to change in IPED definitions.

Graduates

Figure 6 Number of actual and projected graduates, 1981 – 2019



* Indicates years where one or the other, not both, graduate numbers were available.

FACULTY DATA

Number of Faculty

Table 21 Number of core and associated faculty 2014 – 15

| Totals (Core) | |
|--|------|
| Total number of full-time core faculty positions | 2437 |
| Total number of part-time core faculty positions | 282 |
| Mean (Core) | |
| Full-time core faculty positions | 10.2 |
| Part-time core faculty positions | 3 |
| Core faculty FTEs | 10.7 |
| Mean (Associated) | |
| Number of associated faculty | 8 |
| Total FTE of associated faculty | 1.6 |

Table 22 Average number of core faculty vacancies 2014 – 15

| Totals | |
|--|-----|
| Total current vacancies in allocated positions | 168 |
| Total projected vacancies in allocated positions | 114 |
| Total number of new positions to be filled | 65 |

Ratios

Table 23 Ratio of students per core faculty and laboratory faculty member 2014 – 15

| | |
|---|------|
| Number of students per core faculty member | 11.6 |
| Number of students per faculty member in laboratory experiences | 13.3 |

Workload

Table 24 Percentage of faculty by workload (%)

| | % of Time Devoted to | | | | | |
|------------------|------------------------------|----------------|----------------|-------------|---------|-------------------|
| | Teaching Entry-level Program | Other Programs | Administration | Scholarship | Service | Clinical Practice |
| Program Director | 26 % | 2 % | 45 % | 14 % | 2 % | 10 % |
| DCE | 38 | 0.7 | 37 | 10 | 4 | 10 |
| Other Faculty | 51 | 3 | 6 | 22 | 7 | 11 |

Scholarship & Grants

Table 25 Scholarship productivity of core faculty 2014 – 15

| | |
|--|-------|
| Total number of peer reviewed articles | 3,020 |
| Total number of other articles | 712 |
| Total number of books or book chapters | 447 |
| Total number of presentations | 5,935 |
| Total number of other scholarly products subjected to external review and disseminated | 504 |
| Total number of papers, proposals, etc. submitted but not yet accepted or published | 2384 |
| Mean | |
| Peer reviewed articles (excluding abstracts) | 14 |
| Other articles accepted or published | 5 |
| Books or book chapters published | 4 |
| Presentations | 25 |
| Other scholarly products subjected to external review and disseminated | 11 |
| Papers, proposals, etc. submitted but not yet accepted or published | 5 |

Table 26 Grants and grant funding FY 2014 – 15

| Total for All Programs | | |
|---|-------|-------------------|
| Total number of core faculty with grant funding | | 770 |
| Total amount of grant funding | | \$ 395,652,341 |
| Total amount of above funding from NIH | | \$ 224,987,474 |
| Total number of core faculty who submitted proposals for funding, not funded or are not yet funded | | 975 |
| Per Program | | |
| Number of core faculty with grant funding (per program) | Range | 0 – 17 |
| | Mean | 4 |
| Amount of grant funding (per program) | Range | \$ 0 – 42,019,357 |
| | Mean | \$ 2,052,381 |
| Amount of funding from NIH (per program) | Range | \$ 0 – 35,260,929 |
| | Mean | \$ 3,628,830 |
| Number of core faculty who submitted proposals for funding that were not funded or are not yet funded (per program) | Range | 0 – 68 |
| | Mean | 6 |

Clinical Specialists

Table 27 Number of core faculty who are certified clinical specialists 2001 – 15

| | 2001 – 02 | 2003 – 04 | 2004 – 05 | 2007 – 08 | 2009 – 10 | 2010 – 11 | 2011 – 12 | 2012 – 13 | 2014 – 15 |
|-------|--------------|--------------|--------------|--------------|--------------|--------------|--------------|--------------|--------------|
| Total | 436 | 507 | 562 | 690 | 754 | 746 | 828 | 891 | 1103 |
| % | 23.5 | 27.7 | 29.1 | 32.8 | 34.3 | 35.1 | 37.6 | 37.4 | 39.9 |

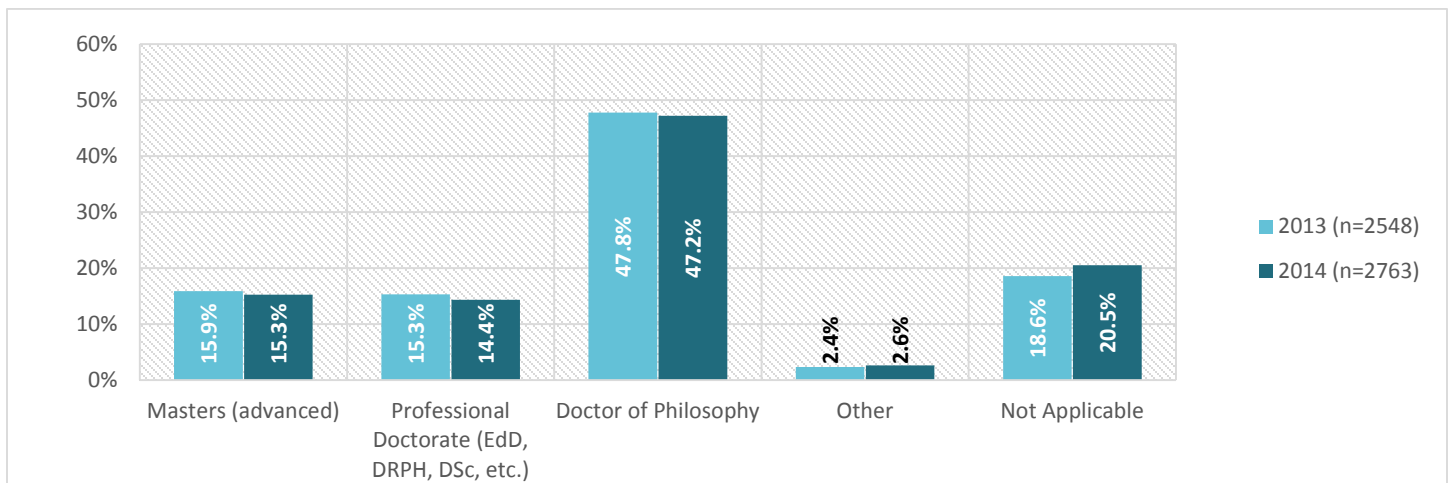
Faculty Demographics

Table 28 Number of faculty by race/ethnicity 2014 – 15

| | Program Director | DCE | Other Faculty | All Core Faculty | Associated |
|----------------------------------|------------------|------------|---------------|------------------|-------------|
| Black or African American | 6 | 10 | 45 | 61 | 52 |
| American Indian/Alaskan Native | 0 | 0 | 5 | 6 | 2 |
| Asian | 8 | 7 | 113 | 128 | 84 |
| White | 212 | 268 | 1702 | 2182 | 1878 |
| Hispanic/Latino of any race | 3 | 8 | 57 | 68 | 69 |
| Native Hawaiian/Pacific Islander | 0 | 0 | 3 | 3 | 12 |
| Two or more races | 1 | 2 | 25 | 28 | 17 |
| Unknown | 1 | 2 | 25 | 28 | 45 |
| Total | 231 | 298 | 1975 | 2504 | 2159 |

Degrees Held, Rank, Tenure Status

Figure 7 Percentage of highest academic degree held by all core faculty 2013 – 14



*Not including DPT Degree

Figure 8 Percentage of core faculty ranks 2012 – 15

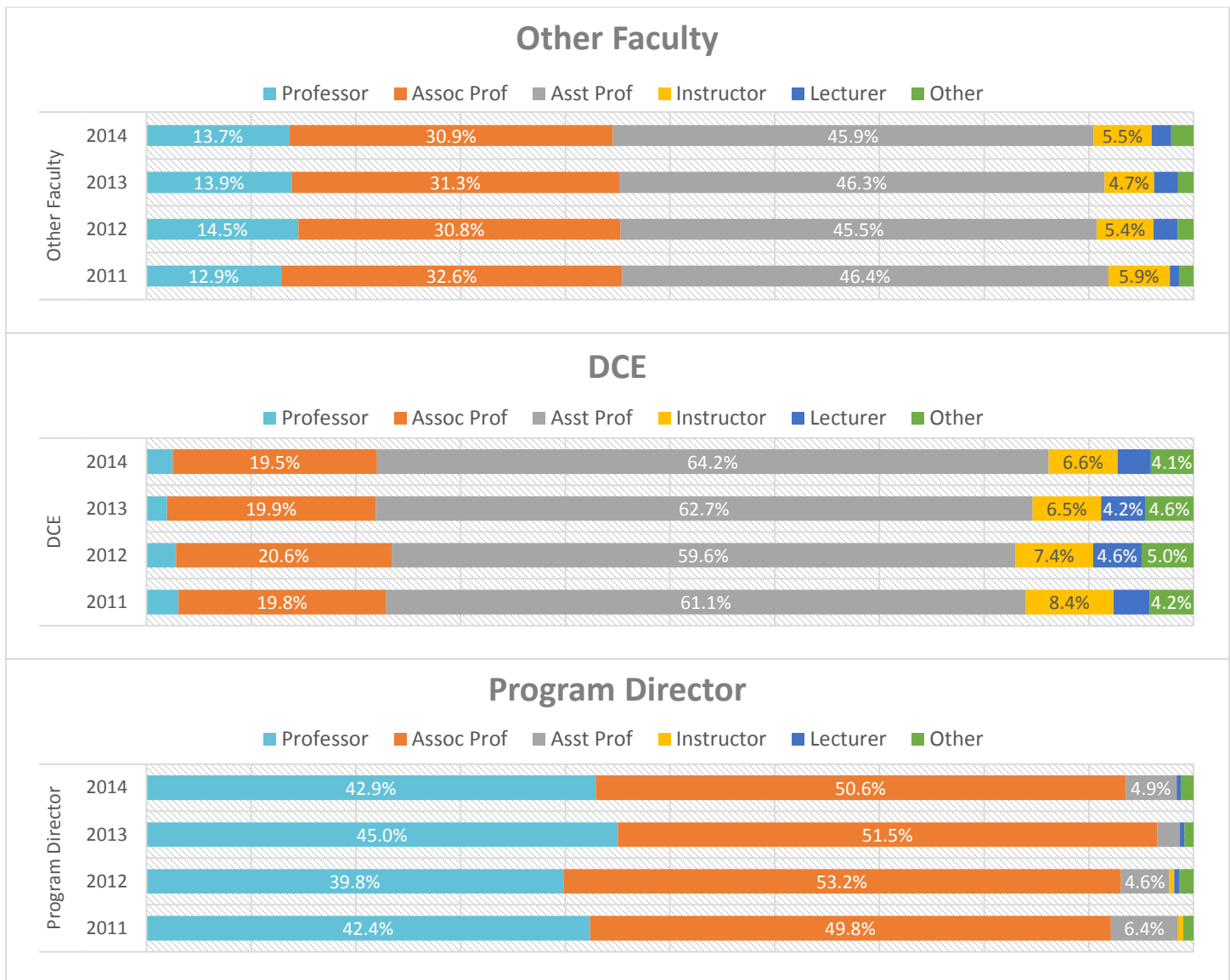


Table 29 Percentage of core faculty ranks 2012 – 15

| | Other Faculty | | | | DCE | | | | Program Director | | | |
|------------|---------------|-------|-------|-------|------|------|------|------|------------------|-------|-------|-------|
| | 2011 | 2012 | 2013 | 2014 | 2011 | 2012 | 2013 | 2014 | 2011 | 2012 | 2013 | 2014 |
| Professor | 12.9% | 14.5% | 13.9% | 13.7% | 3.1% | 2.8% | 2.0% | 2.5% | 42.4% | 39.8% | 45.0% | 42.9% |
| Assoc Prof | 32.6 | 30.8 | 31.3 | 30.9 | 19.8 | 20.6 | 19.9 | 19.5 | 49.8 | 53.2 | 51.5 | 50.6 |
| Asst Prof | 46.4 | 45.5 | 46.3 | 45.9 | 61.1 | 59.6 | 62.7 | 64.2 | 6.4 | 4.6 | 2.2 | 4.9 |
| Instructor | 5.9 | 5.4 | 4.7 | 5.5 | 8.4 | 7.4 | 6.5 | 6.6 | 0.5 | 0.5 | # | # |
| Lecturer | 0.9 | 2.3 | 2.3 | 1.9 | 3.4 | 4.6 | 4.2 | 3.1 | # | 0.5 | # | # |
| Other | 1.4 | 1.5 | 1.5 | 2.1 | 4.2 | 5.0 | 4.6 | 4.1 | 1.0 | 1.4 | 0.9 | 1.2 |

Rounds to zero.

Figure 9 Tenure status of core faculty 2014 – 15

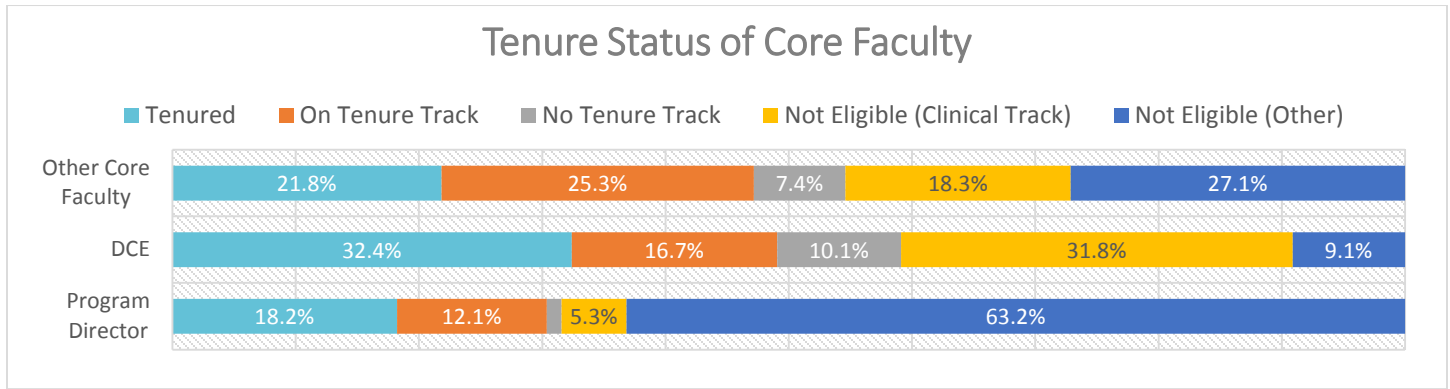


Table 30 Tenure status of core faculty 2014 – 15

| | Other Faculty | DCE | Program Director |
|-------------------------------|---------------|-------|------------------|
| Tenured | 21.8% | 32.4% | 18.2% |
| On Tenure Track | 25.3 | 16.7 | 12.1 |
| No Tenure Track | 7.4 | 10.1 | 1.2 |
| Not Eligible (Clinical Track) | 18.3 | 31.8 | 5.3 |
| Not Eligible (Other) | 27.1 | 9.1 | 63.2 |

Salaries

Table 31 Salaries of Program Directors (N = 163) in Physical Therapist Education Programs by Rank, Length of Appointment, and Type of Institution

| | PUBLIC | | | PRIVATE | | |
|------------|---------|-----------------|------------------|------------------|---------|------------------|
| | 9 – 9.5 | 10 – 11 | 12 | 9 – 9.5 | 10 – 11 | 12 |
| LECTURER | N = | - | - | - | - | - |
| | Mean | - | - | - | - | - |
| | Median | - | - | - | - | - |
| | Range | - | - | - | - | - |
| | STDEV | - | - | - | - | - |
| INSTRUCTOR | N = | - | - | - | - | - |
| | Mean | - | - | - | - | - |
| | Median | - | - | - | - | - |
| | Range | - | - | - | - | - |
| | STDEV | - | - | - | - | - |
| ASST PROF | N = | 1 | - | 3 | - | 3 |
| | Mean | ‡ | - | 95,597 | - | ‡ |
| | Median | ‡ | - | 94,786 | - | ‡ |
| | Range | ‡ | - | 84,004 – 108,000 | - | ‡ |
| | STDEV | ‡ | - | 12,019 | - | ‡ |
| ASSOC PROF | N = | 3 | 2 | 29 | - | 4 |
| | Mean | 88,951 | 118,084 | 117,338 | - | 105,630 |
| | Median | 86,245 | ‡ | 118,520 | - | 105,688 |
| | Range | 88,183 – 97,469 | ‡ | 83,853 – 152,187 | - | 94,412 – 116,733 |
| | STDEV | 7,539 | ‡ | 15,470 | - | 10,228 |
| PROFESSOR | N = | 2 | 4 | 33 | - | 3 |
| | Mean | 96,241 | 98,921 | 151,279 | - | 115,443 |
| | Median | ‡ | 102,868 | 141,272 | - | 106,454 |
| | Range | ‡ | 87,028 – 102,922 | 99,108 – 324,500 | - | 89,936 – 149,940 |
| | STDEV | ‡ | 7,929 | 52,491 | - | 30,996 |
| OTHER | N = | - | - | - | - | 1 |
| | Mean | - | - | - | - | ‡ |
| | Median | - | - | - | - | ‡ |
| | Range | - | - | - | - | ‡ |
| | STDEV | - | - | - | - | ‡ |

- Not available.

‡ Reporting standards not met (too few cases for a reliable estimate).

Table 32 Salaries of DCE's (N = 199) in Physical Therapist Education Programs by Rank, Length of Appointment, and Type of Institution

| | PUBLIC | | | PRIVATE | | |
|------------|---------|-----------------|-----------------|------------------|-----------------|------------------|
| | 9 – 9.5 | 10 – 11 | 12 | 9 – 9.5 | 10 – 11 | 12 |
| LECTURER | N = | 1 | - | 2 | - | - |
| | Mean | ‡ | - | 77,359 | - | - |
| | Median | ‡ | - | ‡ | - | - |
| | Range | ‡ | - | ‡ | - | - |
| | STDEV | ‡ | - | ‡ | - | - |
| INSTRUCTOR | N = | - | 2 | 7 | - | 6 |
| | Mean | - | 64,991 | 76,731 | - | 90,190 |
| | Median | - | ‡ | 73,710 | - | 89,200 |
| | Range | - | ‡ | 67,517 – 95,351 | - | 66,914 – 115,597 |
| | STDEV | - | ‡ | 10,094 | - | 16,002 |
| ASST PROF | N = | 3 | 4 | 41 | 3 | 10 |
| | Mean | 76,836 | 71,692 | 83,372 | 70,605 | 76,221 |
| | Median | 81,645 | 66,270 | 84,961 | - | 73,485 |
| | Range | 63,340 – 85,222 | 61,157 – 93,070 | 65,000 – 99,807 | 65,130 – 75,049 | 66,588 – 96,475 |
| | STDEV | 11,567 | 14,463 | 8,402 | 5,039 | 8,946 |
| ASSOC PROF | N = | 1 | 1 | 18 | 1 | 3 |
| | Mean | ‡ | ‡ | 91,330 | ‡ | 90,723 |
| | Median | ‡ | ‡ | 88,232 | ‡ | 90,411 |
| | Range | ‡ | ‡ | 69,976 – 113,087 | ‡ | 67,085 – 114,673 |
| | STDEV | ‡ | ‡ | 13,494 | ‡ | 23,795 |
| PROFESSOR | N = | - | 1 | 2 | - | - |
| | Mean | - | ‡ | 113,421 | - | - |
| | Median | - | ‡ | ‡ | - | - |
| | Range | - | ‡ | ‡ | - | - |
| | STDEV | - | ‡ | ‡ | - | - |
| OTHER | N = | - | - | 2 | - | - |
| | Mean | - | - | 76,568 | - | - |
| | Median | - | - | ‡ | - | - |
| | Range | - | - | ‡ | - | - |
| | STDEV | - | - | ‡ | - | - |

- Not available.
‡ Reporting standards not met (too few cases for a reliable estimate).

Table 33 Salaries of Full-Time Other Faculty (N = 1,336) in Physical Therapist Education Programs by Rank, Length of Appointment, and Type of Institution

| | PUBLIC | | | PRIVATE | | | |
|------------|---------|------------------|------------------|------------------|------------------|------------------|------------------|
| | 9 – 9.5 | 10 – 11 | 12 | 9 – 9.5 | 10 – 11 | 12 | |
| LECTURER | N = | 1 | - | 5 | - | - | 1 |
| | Mean | ‡ | - | 79,060 | - | - | ‡ |
| | Median | ‡ | - | 81,306 | - | - | ‡ |
| | Range | ‡ | - | 73,332 – 81,960 | - | - | ‡ |
| | STDEV | ‡ | - | 3,875 | - | - | ‡ |
| INSTRUCTOR | N = | 7 | - | 26 | 2 | 5 | 36 |
| | Mean | 69,326 | - | 73,357 | 70,454 | 64,883 | 81,883 |
| | Median | 67,853 | - | 71,513 | ** | 65,280 | 78,214 |
| | Range | 46,000 – 91,000 | - | 51,000 – 96,937 | ** | 60,113 – 67,500 | 51,000 – 143,889 |
| | STDEV | 16,825 | - | 10,792 | ** | 2,849 | 17,628 |
| ASST PROF | N = | 49 | 42 | 198 | 31 | 53 | 249 |
| | Mean | 72,734 | 77,484 | 84,847 | 70,105 | 70,412 | 87,617 |
| | Median | 73,000 | 75,840 | 85,686 | 66,378 | 70,700 | 87,394 |
| | Range | 58,000 – 102,000 | 52,920 – 102,860 | 41,330 – 118,570 | 59,500 – 102,304 | 35,750 – 95,141 | 33,713 – 132,128 |
| | STDEV | 9,956 | 11,339 | 11,518 | 8,501 | 11,814 | 11,975 |
| ASSOC PROF | N = | 39 | 24 | 133 | 30 | 52 | 153 |
| | Mean | 83,795 | 87,993 | 99,200 | 78,916 | 87,533 | 97,530 |
| | Median | 81,559 | 87,657 | 98,152 | 76,706 | 86,207 | 94,161 |
| | Range | 63,690 – 115,000 | 70,350 – 110,513 | 48,645 – 154,540 | 65,760 – 113,002 | 49,500 – 120,054 | 27,576 – 185,000 |
| | STDEV | 10,906 | 9,956 | 15,581 | 10,232 | 13,092 | 18,275 |
| PROFESSOR | N = | 22 | 23 | 50 | 18 | 22 | 55 |
| | Mean | 98,690 | 112,490 | 117,506 | 92,708 | 100,423 | 113,162 |
| | Median | 95,389 | 98,619 | 113,380 | 88,078 | 98,404 | 109,000 |
| | Range | 80,243 – 160,000 | 77,629 – 228,898 | 62,604 – 214,300 | 74,082 – 138,356 | 62,891 – 132,545 | 68,625 – 197,073 |
| | STDEV | 16,386 | 35,837 | 25,795 | 15,593 | 19,759 | 21,511 |
| OTHER | N = | - | - | 5 | 1 | 1 | 3 |
| | Mean | - | - | 67,133 | ‡ | ‡ | 81,278 |
| | Median | - | - | 79,050 | ‡ | ‡ | 80,000 |
| | Range | - | - | 27,997 – 80,000 | ‡ | ‡ | 75,000 – 88,834 |
| | STDEV | - | - | 22,400 | ‡ | ‡ | 7,005 |

- Not available.

‡ Reporting standards not met (too few cases for a reliable estimate).